

Reliable Controls<sup>®</sup> MACH-System

# Reliable<sup>®</sup> controls

...people and technology  
you can rely on<sup>™</sup>

## CONFIGURATION AND INTEGRATION TOOLS

- MSET TOOL FOR ADDRESS, BAUD RATE, AND EXPANSION CARD CONFIGURATION
- PANEL FILE UTILITY FOR RAPID GENERATION OF CLONES FOR APPLICATION DUPLICATION
- OPERATION SYSTEM SEND UTILITY FOR SENDING FIRMWARE OVER THE NETWORK
- NETWORK DIAGNOSTIC TOOL FOR TROUBLESHOOTING
- BACNET/MODBUS/SNMP SETUP FOR OPEN PROTOCOL INTEGRATION
- B BMD SETUP FOR BACNET BROADCASTS ON WAN
- E ENCRYPTED PASSWORD PROTECTION



The Reliable Controls<sup>®</sup> RC-Toolkit<sup>™</sup> software is a full-featured, easy-to-use, configuration application that allows technicians to address, setup, expand systems, and integrate multi-vendor products using open protocols.



**RC-Toolkit<sup>™</sup>** is a feature-rich Windows-based utility that is loaded with easy-to-use tools that make configuration, set-up, and diagnostics a snap. The software is a must for any technician who starts up, commissions, or expands a system, or for the integrator required to tie together multi-vendor products using an open protocol. Connecting to a host network is done using TCP/IP, a modem, or a direct EIA-232 connection with automatic baud rate detection for easy configuration. Password protection prevents unauthorized configuration of controllers.

### TECHNICAL SPECIFICATION

#### PC Requirements

- IBM compatible
- Pentium Processor
- 32MB RAM
- Windows 95/98/2000/NT/XP

#### Communications

- Ethernet
- EIA-232: 57.6 kbps (maximum)
- Modem

### FEATURES

#### MSet

- Configure addresses and baud rates

#### Panel File Utility

- Create duplicate copies of panel files for rapid configuration of large networks

#### OS Send

- Update the firmware remotely from the PC to one or more panels on the network

#### BACnet

- Displays BACnet<sup>®</sup> points shared between controllers

#### MACH-Air<sup>™</sup> Calibration

- Calibrate the damper position of one or more MACH-Air<sup>™</sup> controllers on a network

#### Network Diagnostics

- View diagnostic data on a network to locate potential problems in panel configuration or

wiring

#### Modbus Setup

- Configure the MODBUS-Link<sup>™</sup> to communicate with and extract data from a Modbus device

#### SNMP Setup

- Integrate using Simple Network Management Protocol

#### BBMD Setup

- Integrate WAN using BACnet<sup>®</sup>

#### Password Protection

- Prevents unauthorized configuration

### ORDERING

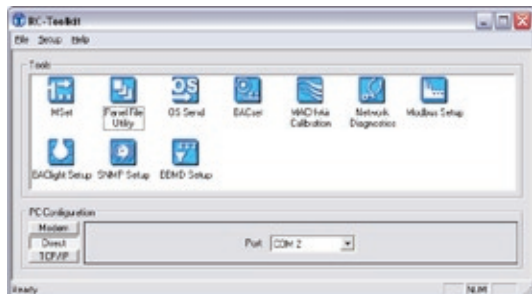
#### RC-TK-SITE

- Site license

#### RC-TK-M

- RC-Toolkit<sup>™</sup> Software Manual

### SCREEN CAPTURES



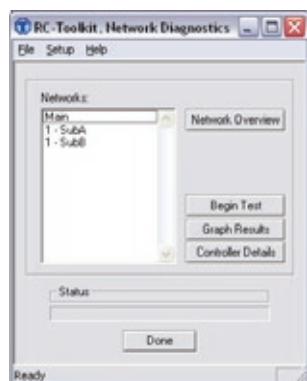
Tool Access



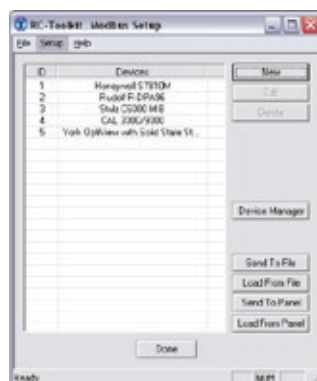
Panel File Utility



OSSend



Network Diagnostics



Modbus Setup



BBMD Setup



MSet

