

# THE *trend*

THE OFFICIAL QUARTERLY NEWSLETTER OF RELIABLE CONTROLS® CORPORATION



## Professional 3D Graphics



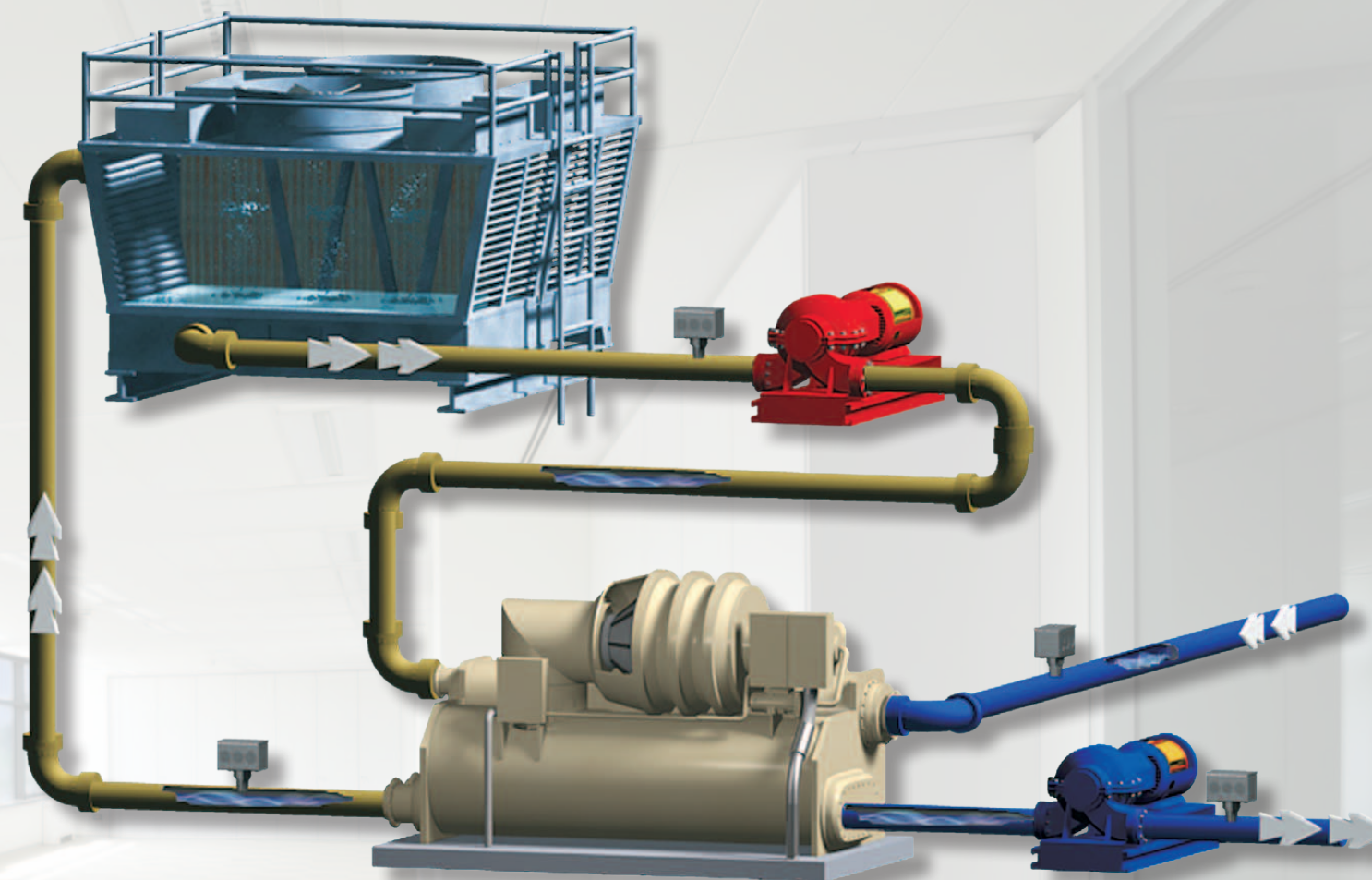
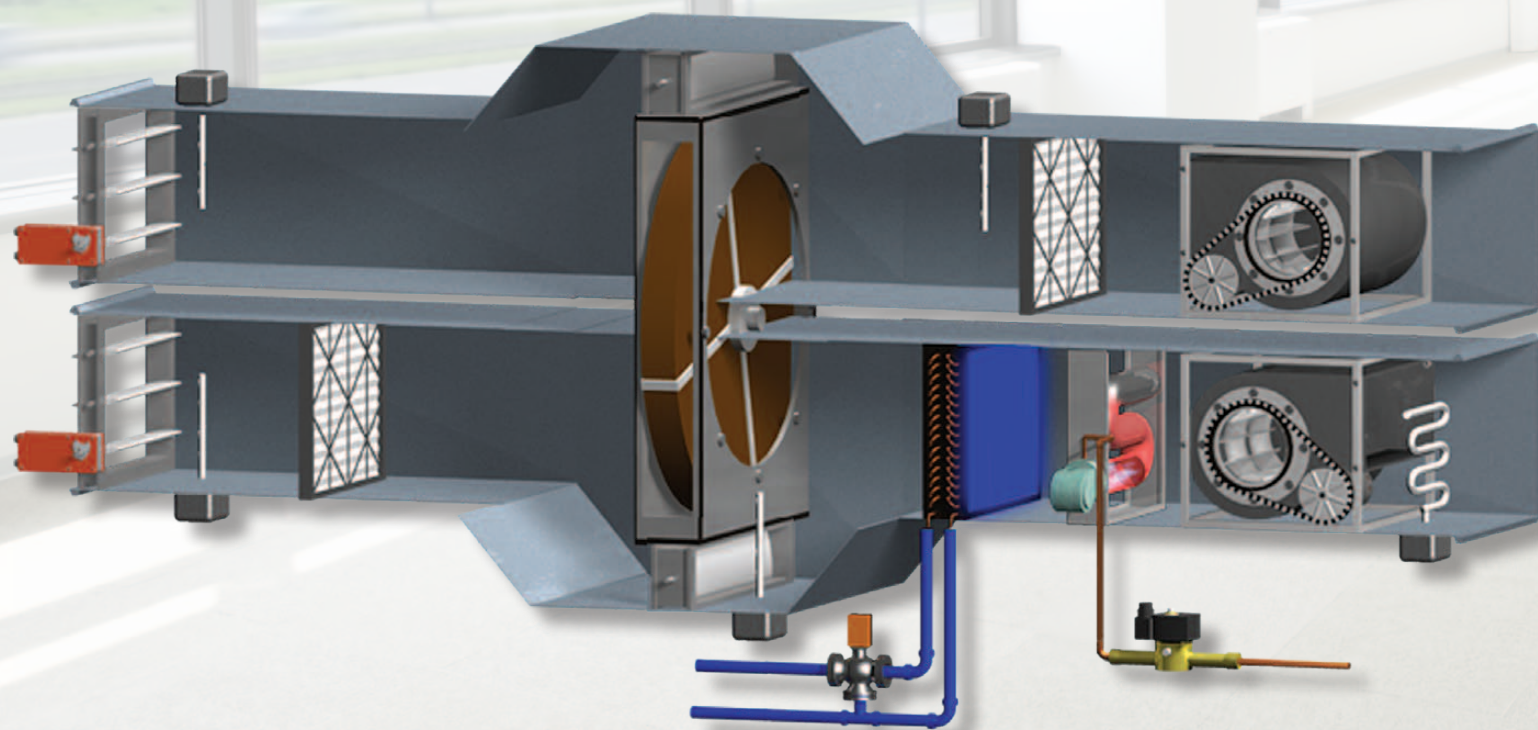


## GRAFXSET 2.0

Quickly generate professional 3D system graphics for RC-Studio® 2.0 and RC-WebView™ 2.0 using this agile, online graphic developer's subscription library.

In order to purchase GrafXSet™ 2.0, you must be a registered end-user of RC-Studio 2.0 and have a User-ID and Password for the "Customer Support Center" on our website. If you need a User-ID, please contact your Authorized Dealer. After you purchase the software, you'll be emailed a product key that allows you to view the library from the Customer Support Center.

Your initial purchase of the library comes with a 12-month subscription that allows you to return to the online library and download new updates at any time during the subscription period. Subscription renewals can be made at any time at a discount price for an additional 12-month period.



GrafXSet™ 2.0 contains four main components:

- **Library Viewer** – allows you to quickly view more than 1225 *png* images and *swf* animations organized in 21 folders. The current folder lineup includes: Actuators, Boilers, Buttons, Chillers, Coils, Compressors, Dampers, Ducts, Fans, Filters, Icons, Misc, Pipes 2D, Pipes 3D, Product Images, Pumps, Sensors, Systems, Valves, VAV Boxes, and Windows. Image attributes include name, filesize, creation date, and the ability to view as thumbnail or full size.
- **Recent Additions** – provides a convenient listing of the last 24 items posted to the library.
- **Graphic Requests** – a full featured, easy to use service that lets you submit an image request to our developers and graphic artists. This service allows you to describe your request and conveniently upload examples or links to your concept. An active log of past requests is included in the service allowing you to see the details and status of previous graphic requests.
- **My GrafXSet** – using your subscription product key as a password, access this protected area to download the entire GrafXSet library, renew your subscription, view and submit graphic requests, view available updates to your library, view your entire library, and view your library download history.



## THE TRADE SHOW CIRCUIT

In the wake of the AHR Expo in late January, the rush of trade show fever continues throughout the year. In some respects, it is easy to lose sight of corporate advances when you are focused on the day-to-day details, but when you look at the list of trade shows in which the company will have been representation over the course of the year, it can be a great barometer for gauging growth and an indication of where our presence is most strongly felt.

Of the remaining trade shows for the year, three general themes soon become apparent: facility-based shows; green building shows; and intelligent building shows.

Facility-based shows are intended for facility professionals responsible for the management, operations, maintenance, renovation and construction of non-residential buildings and can be either small, localized gatherings or large, established shows, both of which are important to our industry.

**Wisconsin Association of School Board Officials (WASBO) Conference**  
Kalahari Conference Center, Wisconsin Dells, WI, May 25–28

**School Plant Officials Association of BC (SPOA) Conference**  
Penticton Trade & Convention Centre, Penticton, BC, June 1–4

**Facility Decisions Conference & Expo**  
Las Vegas Convention Center, Las Vegas, NV, October 5–6

With growing interest in green buildings, Reliable Controls® will be well represented at both the Greener Builder 2010 show and the Virtual Energy Forum (VEF). The Greener Builder show is a new direction for trade shows – Northern California's leading general contractors partnered with the Northern California Chapter of the USGBC to address the growing need for green building trained subcontractors, providing everything they need to know to work successfully on LEED and green building projects. And once again, Reliable Controls® will have an online booth at the VEF and will feature an informative online discussion with Tom Zaban, Executive Vice President of Sales and Marketing for the company.

**Greener Builder 2010**  
South San Francisco Conference Center, South San Francisco, CA, June 1–4

**Virtual Energy Forum**  
Free Online Event, June 16–17

Intelligent building shows are great for operators looking to enhance their understanding of energy savings, building advances, and building management best practices.

**West Coast Energy Management Congress**  
Washington State Convention & Trade Center, Seattle, WA, June 15–16

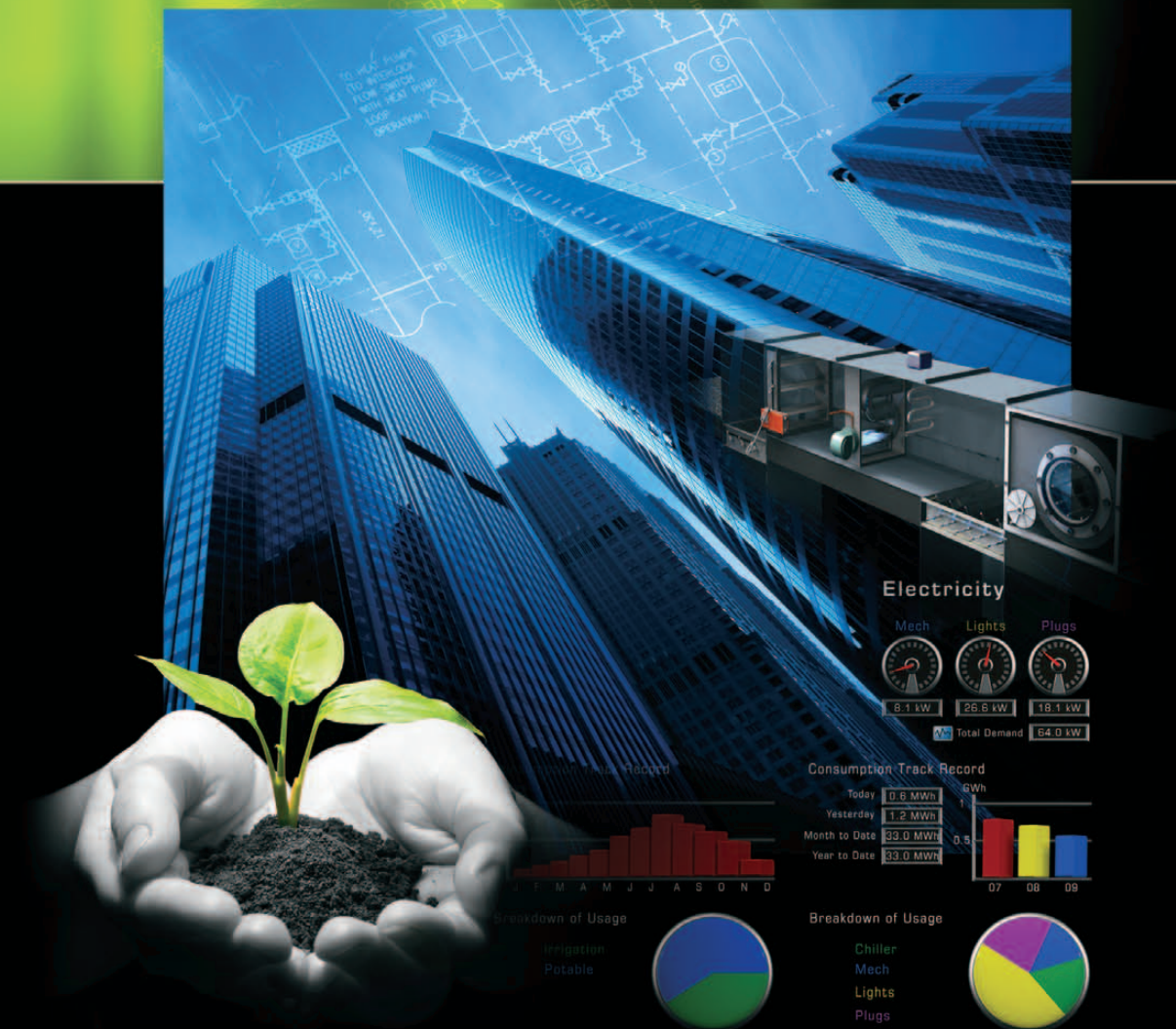
**Shanghai Intelligent Building Exhibition**  
Shanghai Everbright Convention & Exhibition Center, Shanghai, CN, September 15–17

**Toronto Property Management Expo**  
Metro Toronto Convention Centre South Building, Toronto, ON, December 1–3

### STRENGTHEN YOUR SUSTAINABILITY

TO REGISTER AND LEARN MORE, VISIT... [www.reliablecontrols.com/news/events/](http://www.reliablecontrols.com/news/events/)

internet  
connected  
building  
controls



[www.reliablecontrols.com](http://www.reliablecontrols.com)





## SHANGHAI INSTALLATION ENGINEERING

Shanghai, China



## HANGZHOU NANDU COMPUTER ENGINEERING

Hangzhou, Zhejiang  
China



## WAIBEL ENERGY SYSTEMS

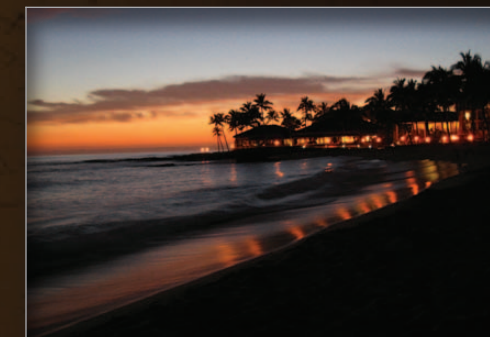
Dayton, OH, USA

Reliable Controls® signs up approximately 30 new dealers each year. If you know of a controls company looking to take on a new line, please contact the Regional Sales Manager in your area.



## SYSTEM MART LIMITED

Kwun Tong, Kowloon  
Hong Kong, China



## KAUAI AIR CONDITIONING & REFRIGERATION

Kapaa, HI, USA

|                |               |                    |
|----------------|---------------|--------------------|
| Eastern US     | Chris Gleason | 215.563.4482       |
| MidWestern USA | Rick Rosine   | 614.545.8020       |
| Western USA    | Will McNeill  | 415.892.4165       |
| Eastern Canada | Gary Knowles  | 905.355.2340       |
| Western Canada | Robb Shipley  | 403.873.5131       |
| Mexico         | Pat Cronin    | 262.391.5406       |
| Australasia    | Eric Balt     | (+61) 03.9799.8211 |
| China          | Richard Yu    | 86.21.61498523     |
| International  | Tom Zaban     | 250.475.2036       |



## LEED-ND OFFICIAL



Last month, LEED celebrated its 10<sup>th</sup> anniversary. For a decade, the LEED rating systems have driven the marketplace toward recognizing the central tenet of green building: that our economic, environmental and personal health is dramatically impacted by the places where we live, work, learn, shop, heal, dine and play.

Market transformation will depend on our ability to create sustainable communities. To help with a significant first step to meet this end, the USGBC recently approved the LEED for Neighborhood Development rating system (LEED-ND).

LEED for Neighborhood Development certifies projects of all sizes – whether a third of an acre or 300,000 acres – in four unique credit categories: Smart Location & Linkage, Neighborhood Pattern & Design, Green Infrastructure & Buildings, and Innovation & Design Process. These credit categories integrate the principles of smart growth, new urbanism, and green building into the first rating system for neighborhood design. LEED for Neighborhood Development enables an integrated, holistic approach that defines LEED from the building level to the whole-development level.

The EPA estimates that as much as 90% of our days are spent in buildings, but we spend 100% of our time in communities: not just buildings, but also that in-between space, the infrastructure and linkages and sense of place that tie those buildings together and connect us to the outside world – and to each other.

For Reliable Controls®, the involvement with the LEED-ND pilot program began in July 2007 with the Dockside Green neighborhood in Victoria, British Columbia, one of 240 projects registered in the pilot.

To learn more about the LEED-ND designation, please visit...



[www.usgbc.org](http://www.usgbc.org)  
[www.cagbc.org](http://www.cagbc.org)



Dockside Green, Victoria, BC



[www.docksidegreen.com](http://www.docksidegreen.com)

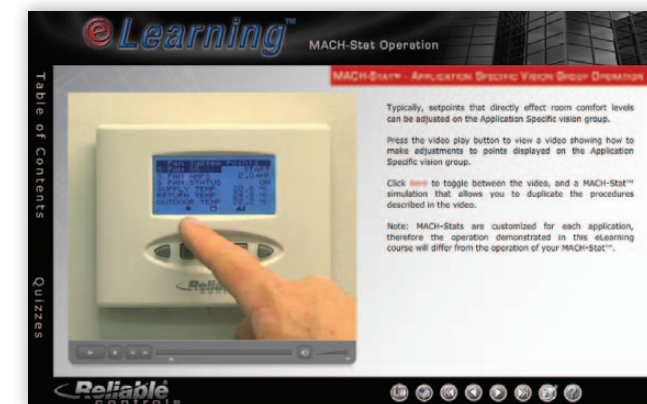
## MACH-STAT OPERATION



If you operate a MACH-Stat™ controller, or have them in your facility and want to know more about this exciting product, an eLearning course has been specifically designed with your needs in mind. The “MACH-Stat Operation” eLearning course is intended to instruct MACH-Stat™ operators on day-to-day procedures including checking system status, overriding points, adjusting schedules, entering holidays, acknowledging alarms, etc. The course includes several instructional videos, and a MACH-Stat™ simulator to allow operators to practice procedures described in the videos.

By simply using the MACH-Stat™ LCD and keypad, you can make numerous adjustments that can affect the operation of your HVAC system, without ever changing the controller's custom-built programming.

To get up to speed on the versatile MACH-Stat™ controller interface, visit the Customer Support Center today!



## OPERATOR TRAINING

Reliable Controls® two-day Operator Training course is designed for facility managers and RC-Studio® 2.0 operators who wish to derive maximum benefit from their MACH-System installations. Attendees should have some computer experience, and have regular operation of an RC-Studio® 2.0 workstation as part of their job description. The course includes database entry, alarm management, Control-BASIC programming, scheduling, Trend Logs, Runtime Logs, System Group graphics and much more.

For further information and pricing, or to sign up for our upcoming Operator Training session, contact your local Reliable Controls dealer.



## LEARNING FROM LIVING WALLS



use in buildings via future development of research and educational materials.”

The renovation includes a new learning and meeting center. Sustainable measures include projected reduction in annual energy usage of more than 31.5 percent through use of a dedicated outdoor air supply with energy recovery and humidity control, ground-source heat pumps and variable refrigerant flow systems with heat recovery; 52.3 percent reduction in water consumption by using low-flow or no-flow fixtures throughout the building; and increase of outside air delivered to each space by 30 percent beyond minimum rates specified in ASHRAE’s Standard 62.1.

More information can be found at [www.ashrae.org/building](http://www.ashrae.org/building).



## RELIABLE CONTROLS HEADQUARTERS UPDATE

In the footsteps of the ASHRAE headquarters reno and the new USGBC headquarters, Reliable Controls® is confidently moving forward with construction plans for a naturally-ventilated LEED-designated expansion at our Victoria, BC, headquarters. If all goes according to plan, shovels will hit the dirt in the late fall of 2010 with occupancy in mid 2012. Whatever the move-in date, the structure will serve as a living laboratory where we are certain that we will continue to develop highly efficient and easy to use products based in part on customer feedback and what we learn from our ventilating walls.

The ASHRAE headquarters in Atlanta, Georgia has recently been awarded a LEED Platinum rating, stemming from a 7 million dollar reno in the summer of 2009. ASHRAE’s newly renovated headquarters effectively serves as a hands-on laboratory to help extend the Society’s knowledge and information worldwide.

As an innovator in energy-efficient technology, ASHRAE felt its headquarters should serve as a showcase of sustainability. “The resulting design truly reflects that sentiment, as well as how ASHRAE standards and guidelines can be put into practice to result in a high-performance building,” said ASHRAE president Gordon Holness.

“While our first objective was to provide a healthy, comfortable and productive environment for our staff, we also wanted to set an example of what can be done to renovate existing buildings. Given that 75% to 80% of all existing buildings will still be around in 2030, our greatest opportunity for a sustainable future is through the upgrade and retrofit of these buildings,” said Holness.

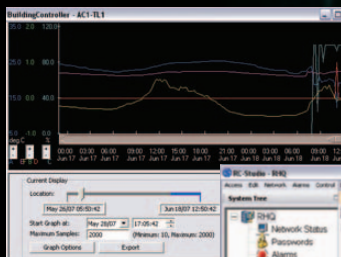
“Our Living Laboratory provides value to ASHRAE members and the industry by allowing for evaluation of the ongoing energy and operational performance of the building at a level that is unprecedented in current commercial buildings,” Bill Harrison, ASHRAE president, said. “The lab allows ASHRAE to contribute significantly to reducing energy



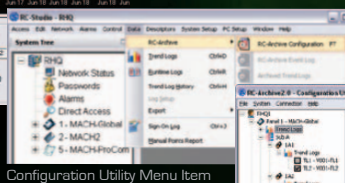


## Secure data storage

Rigourously logging critical system data into an industry standard SQL database, RC-Archive™ 2.0 from Reliable Controls® helps you chart your facility's energy and environmental performance.



Trend Log Viewer



Configuration Utility Menu Item

| Trend Log | Name  | Status  | Update Threshold |
|-----------|-------|---------|------------------|
| 1         | ITL1  | Enabled | 17%              |
| 2         | ITL2  | Enabled | 17%              |
| 3         | ITL3  | Enabled | 17%              |
| 4         | ITL4  | Enabled | 17%              |
| 5         | ITL5  | Enabled | 17%              |
| 6         | ITL6  | Enabled | 17%              |
| 7         | ITL7  | Enabled | 17%              |
| 8         | ITL8  | Enabled | 17%              |
| 9         | ITL9  | Enabled | 17%              |
| 10        | ITL10 | Enabled | 17%              |
| 11        | ITL11 | Enabled | 17%              |
| 12        | ITL12 | Enabled | 17%              |
| 13        | ITL13 | Enabled | 17%              |
| 14        | ITL14 | Enabled | 17%              |
| 15        | ITL15 | Enabled | 17%              |
| 16        | ITL16 | Enabled | 17%              |

Configuration Utility

