

THE *trend*

THE OFFICIAL QUARTERLY NEWSLETTER OF RELIABLE CONTROLS® CORPORATION

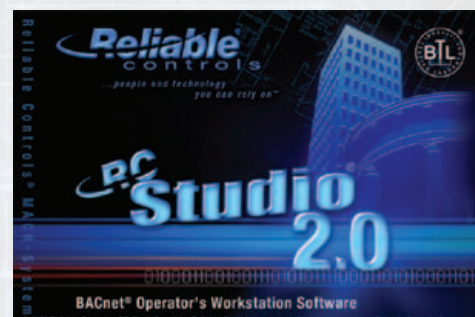


Back From The Lab...



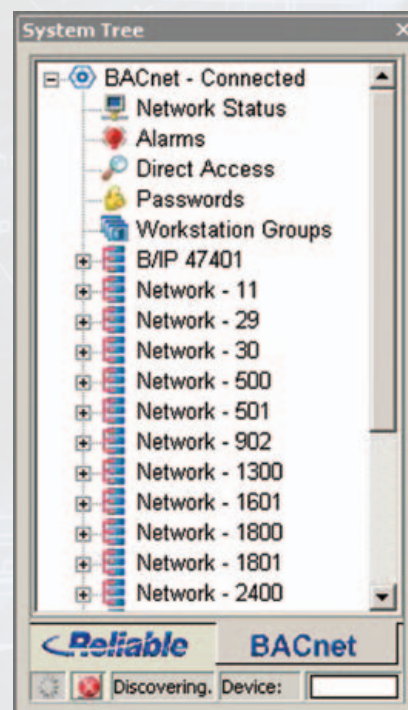
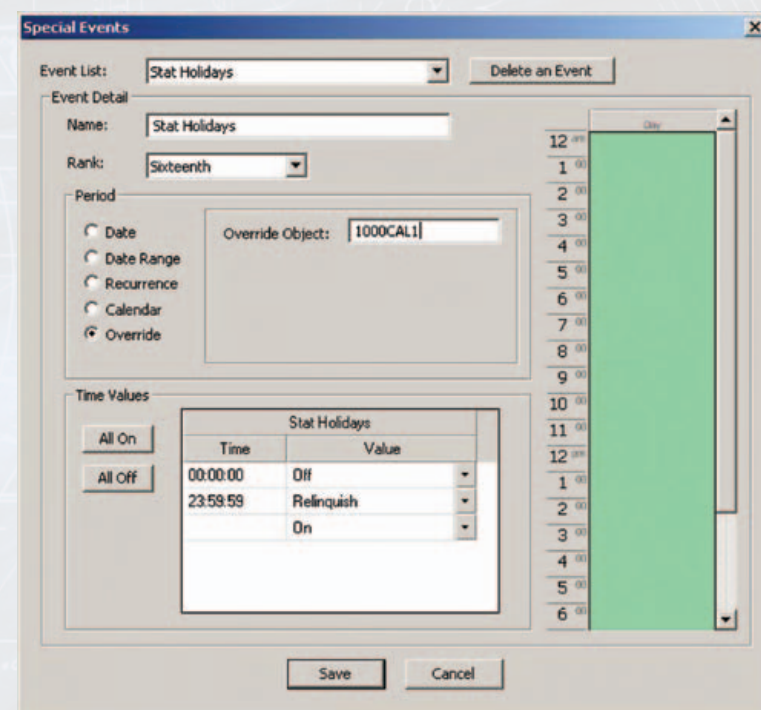


... and BTL Listed!



For the first time since the inception of the BTL in 2002, software is finally being approved for certification. We are very pleased to announce that the current version of RC-Studio® 2.0 has been officially listed as a BACnet Workstation (B-OWS).

What this ground-breaking certification means to you as a valued Reliable Controls® customer is that you can have absolute confidence that RC-Studio® 2.0 will communicate with any BTL certified BACnet® device – say goodbye to guess work, and say hello to a new standard of working smarter.



RC-STUDIO 2.0 – WHAT'S NEW

Update 1.50 of RC-Studio® 2.0 signifies a new milestone in our product line. We've implemented a host of new features and improvements.

BACNET NETWORK STATUS

Network 100 Status										
<div> <div>Refresh</div> <div>Mode</div> <div>Stop</div> <div>Create Device</div> </div>										
Number of controllers on this network: 2										
	Controller Name	Model	Vendor	Pan File	Net Status	Version	Scans	Network	Device	
1	AC DRIVE 3	ACH550	ABB	3 ...	OnLine	0504		100	3 ...	
2	MACH-ProSys	MACH-ProSys	Reliable Controls	FSTP2 ...	OnLine	7.19.21623	40.00	100	2000 ...	

The **BACnet Network Status** worksheet is available for both the entire system and individual BACnet® networks from the BACnet System Tree.

Features of the **BACnet Network Status** worksheet include:

- the inclusion of devices from all manufacturers,
- the ability to sort by any column,
- the ability to export to *Microsoft Excel* for creating system documentation,
- the ability to access device properties,
- the ability to see the current online status in the Net Status column for devices on a MS/TP network hosted by a MACH-Pro™ series controller, and
- the ability to add SSC devices and specify the *pan* file by using the Create Device tool in Simulator mode.

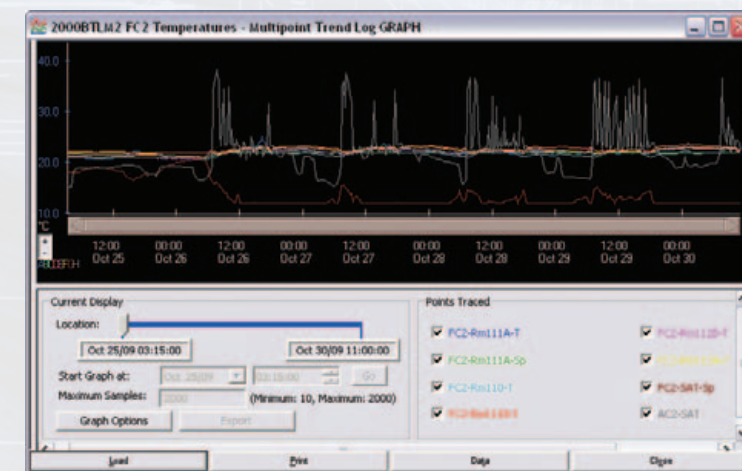
BACNET MULTIPOINT TREND LOG

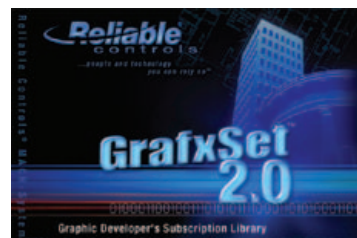
RC-Studio® 2.0 supports the BACnet Multipoint Trend Log as defined in the 135-2008 BACnet® standard. MACH-Pro™ series controllers and the SMART-Space Controller™ support these Trend Logs. Each Trend Log can sample up to eight values on a programmable interval. The Trend Log records the timestamp with each sample and can be triggered from Control-BASIC by setting its value to -1 (1000BTLM1 = -1).

BACNET SCHEDULES – REMOTE OBJECT OVERRIDE

Reliable Controls® BACnet® schedules now support the ability to override a schedule with any remote BACnet® object. This is a proprietary extension to the BACnet® standard as the standard allows only linking to calendars within the controller.

RC-Studio® 2.0 update 1.50 offers many more items of note, including improved graphic scaling, BACnet MS/TP slave support, several enhancements to the **Systems List** worksheet, BACnet output alarms, and the BACnet Discovery Indicator. To download the update free of charge, log onto the Customer Support Center of our website and click the Software tab. If you don't have a UserID, click the Sales/Customer tab to register for support center access.





RELIABLE CONTROLS® IS PLEASED TO ANNOUNCE THE RELEASE OF THE GRAFXSET™ 2.0 GRAPHIC DEVELOPER'S SUBSCRIPTION LIBRARY.

Quickly generate professional 3D system graphics for RC-Studio® 2.0 and RC-WebView™ 2.0 using this agile, online graphic developer's subscription library.

Reliable
controls

...people & technology
you can rely on™

Customer Support Home | Contact Us | Help

BACnet®

Software Official Releases
Technical Graphics Library
Manuals
Training

Email Print T

GrafxSet™ 2.0
library viewer

The Reliable Controls® GrafxSet™ 2.0 Library and Subscription Service enable you to create and develop system group graphics in RC-Studio®. Use the tools below to view and download the graphics library, update your subscription, request new graphics, and see what's new.

[\[Purchase Now\]](#)
[\[User Guide\]](#)

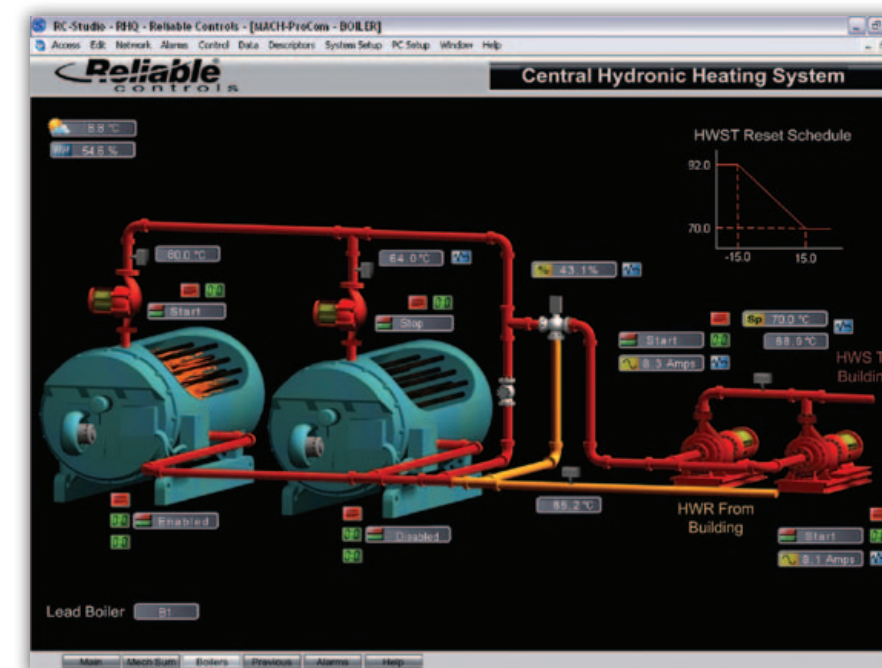
GrafxSet 2.0 Library [\[Library Viewer\]](#) [\[Recent Additions\]](#) [\[Graphic Requests\]](#) [\[My GrafxSet\]](#)

Welcome to the GrafxSet 2.0 Library. The Library is to be used in conjunction with your favourite graphics program (i.e. Visio or Fireworks). Click on a folder name below to view graphics. To enlarge a graphic click on the graphic, to minimize click on the enlarged graphic. Number of... PNG Graphics: 728 & SWF Animations: 53

FOLDER	LAST UPDATED
+ [Actuators]	Jul 16, 2009
- [Boilers]	Jul 23, 2009
<div>Boiler-Castiron-Front-V01.swf Jul 23, 2009 22.2 KB</div> <div>Boiler-Castiron01-Front-V01.png Jul 21, 2009 30.8 KB</div> <div>Boiler-Castiron02-Front-V01.png Jul 22, 2009 39.5 KB</div> <div>Boiler-Mod-Cond-Side-V01.png Jul 15, 2009 33.7 KB</div> <div>Boiler-Mod-Cond-Side-V01.swf Jul 15, 2009 17.4 KB</div> <div>Boiler-Shell-Tube-Front-V01.png Jul 15, 2009 89.5 KB</div> <div>Boiler-Shell-Tube-Front-V01.swf Jul 15, 2009 41.2 KB</div>	
+ [Buttons]	Jul 16, 2009
+ [Chillers]	Jul 16, 2009
+ [Coils]	Aug 12, 2009

Customers with access to the Customer Support Center can view the library by navigating to Software > Graphics Library. To purchase GrafxSet™ 2.0 simply click the [Purchase Now] link.

Purchase GrafxSet™ 2.0 and receive a product key that allows you to download the library online and much more.



GrafxSet™ 2.0 contains four main components:

- **Library Viewer** – allows you to quickly view more than 600 png images and swf animations organized in 19 folders,
- **Recent Additions** – provides a convenient listing of the last 24 items posted to the library,
- **Graphic Requests** – a full featured, easy-to-use service that lets you submit an image request to our developers and graphic artists (This service allows you to describe your request and conveniently upload examples. An active log of past requests is included in the service allowing you to see the details and status of previous graphic requests.), and
- **My GrafxSet** – using your subscription product key as a password, access this protected area to download the entire GrafxSet library, renew your subscription, view and submit graphic requests, view available updates to your library, view your entire library, and view your library download history.

Click the [Purchase Now] link to make your request to buy GrafxSet™ 2.0, today.



NEW DEALERS



MAIN LINE POWER CONTROL SYSTEMS

LETHBRIDGE, AB, CANADA



ENGAGE BUILDING SYSTEMS

CALGARY, AB, CANADA



CAPITAL CITY PLUMBING

MERIDIAN, ID, USA



SHEN YANG - DONG JIAN TECHNOLOGY

SHENYANG, CHINA



FREIERS ELECTRIC & HEATING

EAST ELLSWORTH, WI, USA



INTELLI-BUILDING CONTROL & SOLUTIONS

CHICAGO, IL, USA



ENGINEERED ENVIRONMENT SYSTEMS

MARTINEZ, CA, USA



OPT AUTOMATION CONTROLS

GUANGZHOU, CHINA



SOUTHWEST AIR CONDITIONING SERVICE

LAS VEGAS, NV, USA



RD ELECTRICAL SYSTEMS

GALLUP, NM, USA



FORTE CONTROLS

MELBOURNE, VIC, AUSTRALIA



FNAC PROJECTS

CAIRNS, QLD, AUSTRALIA

USGBC's New Digs Go PLATINUM



The new head office of the U.S. Green Building Council (USGBC) in the Foggy Bottom district of northwestern Washington DC has been certified Platinum under the latest version of the LEED green building rating system.

The new space triples the size of the USGBC's previous location, reflective of the green building industry itself, which is projected to soar to \$60 billion by 2010. "The vision of the space was to exemplify everything a LEED building is: high-performing, resource-efficient, healthy and productive," said Rick Fedrizzi, President, CEO & Founding Chair, USGBC. "Using the newest version of the rating

system renders our space on the cutting edge of building science and technology, and will serve as an educational learning lab and is highly representative of a transforming building market."

The 75,000 square foot office, divided between two floors, is connected by an open staircase in the bright lobby, behind which is one of the space's most prominent design features: a two-story water feature, which helps bring the outdoors inside the space. The elevator lobby, reception and conference breakout areas are clad in 500-year-old gum wood that was salvaged from the bottom of the Tennessee River. Carved into a two-story section of the gum wood paneling is an off-centered relief of the USGBC logo that clearly brands the space.



Aggressive water and energy reduction goals were set to reduce water use by 40 percent and energy use to be less than half that of a typical office. Floor to ceiling glass windows provide abundant daylighting to any workstation in the office, while the electronic window shade system maximizes natural light and minimizes glare. A corridor running through the office space, called the Learning Pathway, serves as a living case study to understand the integrative sustainable design techniques of the new headquarters, which includes the Material Wall - a collection of flashcards detailing the origin and utility of every material used in the facility. The Performance Dashboard is a flat panel television in the reception area which details the performance metrics of the space. The Progress Wall exhibits metrics such as LEED membership, LEED projects, LEED Accredited Professionals and World Green Building Councils, all surrounded by a timeline of significant environmental achievements. Inspirational quotes are painted in the form of an oak tree with its branches extending along the length of another wall entitled "What We Believe."



The Council, which moved into its new office in March 2009, outgrew its previous space as a result of the explosive growth it experienced over the last few years. More than 35,000 projects are currently participating in the LEED system, comprising over 5.6 billion square feet of construction space in 91 countries.

www.usgbc.org



Reliable Controls Annex – Going for the Platinum

On October 13, 2009 Reliable Controls® received approval for a development application to allow the construction of a 17,000 ft² (1,600 m²) annex to the Victoria, British Columbia corporate headquarters. One of the most significant aspects of the project is the commitment to obtain a LEED-NC Platinum rating, the highest Green Building Program category of the Canada Green Building Council.

Rainwater Recovery – Captured rainwater will be used to reduce potable water consumption and irrigation by as much as 50% over conventional means.

Stormwater Treatment – Stormwater from the site will be used to replenish a courtyard pool located between the original building and the annex, as well as irrigate sensitive landscape planters and flush toilets. Runoff from the south facing roof areas will discharge onto a green roof located on the parking lot rooftop. Overflow will be directed towards a large rain garden in front of the building. Overflow from the courtyard water feature will be stored in a cistern.

Green Roof – Half of the annex roof surface will be a carpet of low-growing native species adapted to summer drought conditions, in this case, Stonecrop, Blue Lagoon Stonecrop, Angelina Stonecrop, and Cape Blanco Stonecrop.

Natural Ventilation – The building's interior will be built around a central atrium that serves as the key component of the ventilation system, allowing the air to circulate between floors. The atrium will be topped by two wind-catchers with operable vents which cause the air within the building to rise and create air flow. As a result, the building will require little, if any, mechanical air conditioning.

Natural Lighting – The wind-catcher system sitting atop the atrium will include glazing to transmit skylight for the offices and meeting rooms below.

Alternative Transportation – With Victoria being Canada's cycling capital, it was a no-brainer to exceed the alternative transportation standard by offering changing and shower facilities for 15% of the building's workforce, instead of the standard 5%.

RC-WebVIEW 2.0 – WHAT'S NEW

Update 1.50 of RC-WebVIEW™ 2.0 was recently released to accommodate new product offerings by Microsoft – specifically *Microsoft Internet Explorer 8.0* and *Microsoft Windows 7*. While *Microsoft Internet Explorer 8.0* has been available to the consumer for some time, *Microsoft Windows 7* was recently released on October 22nd.

Some of the other new features include:

Support for domain names instead of static IP addresses by using DNS lookup to resolve addresses.

The Group Display, Scale-To-Fit menu, has been expanded to include the options *Preserve Aspect Ratio*, *Entire Window*, and *Actual Size*, allowing the image quality to be the same as RC-Studio® 2.0. In fact, RC-Studio® 2.0 and RC-WebVIEW™ 2.0 share the same graphics libraries.

Active Directory authentication can be used for user site login. If Active Directory authentication for a site is enabled, a user must include their Domain Name and user name together on the login page (i.e. RELIABLECONTROL\reliahbill).

Old archives can be selected from the **Trend Log** worksheet. The current, active archive, is the default selection.



Operator Training

Let us bring the goods to you...



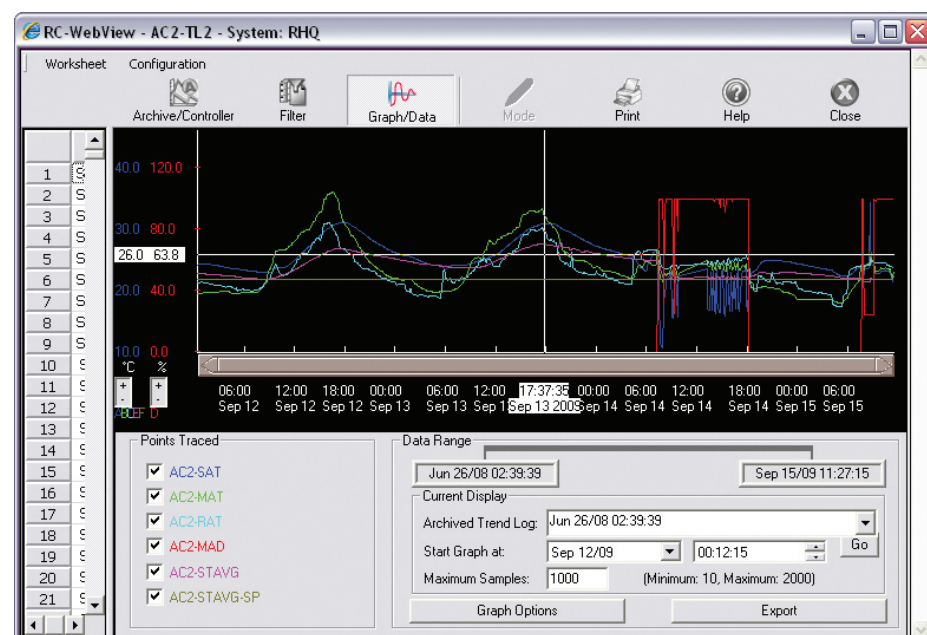
Operator training session in Quebec City, PQ.



Reliable Controls® two day Operator Training course is designed for facility managers and RC-Studio® 2.0 operators who wish to derive maximum benefit from their MACH-System installations. Attendees should have some computer experience, and have regular operation of an RC-Studio® 2.0 workstation as part of their job description. The course includes database entry, alarm management, Control-BASIC programming, scheduling, Trend Logs, Runtime Logs, System Group graphics and much more.

We're looking for about 10 students, preferably from a single facility, or we can group together students from 2 or 3 facilities to fill up a class. At a recent Operator Training class held for the Calgary Board of Education, 7 employees were trained over 4 morning sessions, and 7 different employees were trained over 4 afternoon sessions. Reliable Controls® supplied a laptop PC and a fully functional Training Case for each attendee, including two controllers and a SMART-Space Sensor™. With all the attendees employed by a single customer, the conversation and information presented continuously focused on issues important to that customer.

For further information and pricing, or to request an Operator Training session in your town, call your local Reliable Controls® dealer.



Powerful creative freedom

Recognized as the ultimate all-in-one BACnet[®] operator workstation solution, RC-Studio[®] 2.0 from Reliable Controls[®] provides outstanding functionality and ease of programming.



Better by design