

TOP 25
Made VIATec's
Top 25



RC-STUDIO
Update 1.80 was
recently released.

www.reliablecontrols.com

RUNtime

The Quarterly Newsletter of Reliable Controls® Corporation

Q3 - 2013



SSL-CO2

A closer look at the
SMART-Sensor™ LCD,
now with an optional CO₂ sensor



Member of
BACnet
International



Reliable
controls

SSL-CO2

A closer look at the
SMART-Sensor™ LCD,
now with a optional CO₂ sensor

The Reliable Controls® SMART-Sensor™ LCD (SSL)
is a powerful and dynamic microprocessor-based
sensor that monitors room conditions and provides
the ability to display and adjust points from any
MACH-System controller connected to the
SMART-Net™ network.

The SSL is extremely easy to connect. Simply plug the SSL to a SMART-Net™ port on any Reliable Controls® MACH-System controller to gain easy access to space temperature and humidity measurements; change setpoints; and auto-detect occupancy. The most recent iteration of this space-sensing workhorse allows measurement of carbon dioxide. This can be extremely useful when monitoring indoor air quality. A high CO₂ level could indicate inadequate ventilation and could lead to fatigue, irritability, and loss of focus of the occupants.

Multi-Sensing

The SSL ships standard with onboard temperature sensor and can also be ordered with any of the following options:

- **CO₂** (0-2000 ppm ±50 ppm NDIR sensor)
- **Humidity** (Accurate onboard humidity sensor)
- **Occupancy** (Extremely compact sensor, ideal for detecting the motion of a person up to 5m [16ft.] away)
- **Extra I/O** (Up to 2 thermistor or dry contact inputs, and up to 2 digital TRIAC outputs)



Multipoint Display

- Up to 10 user-specified points can be displayed (name and value)
- Multiple point values and icons can appear on the main display
- Dedicated icons for Auto, Manual, Cool, Heat, Fan, and Fan Speed
- Display time, analog, or digital values
- Optionally configured to blank its display after 10 seconds of idle time

Rubber Buttons

- Center button navigates from point to point
- Plus/minus buttons changes value/state for points allowing user adjust

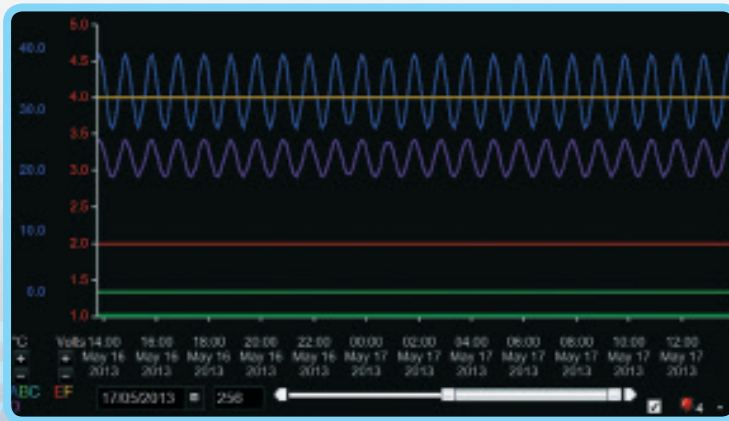
Aesthetic Design

- Smooth contoured lines
- Slim profile
- Available in Ivory or White

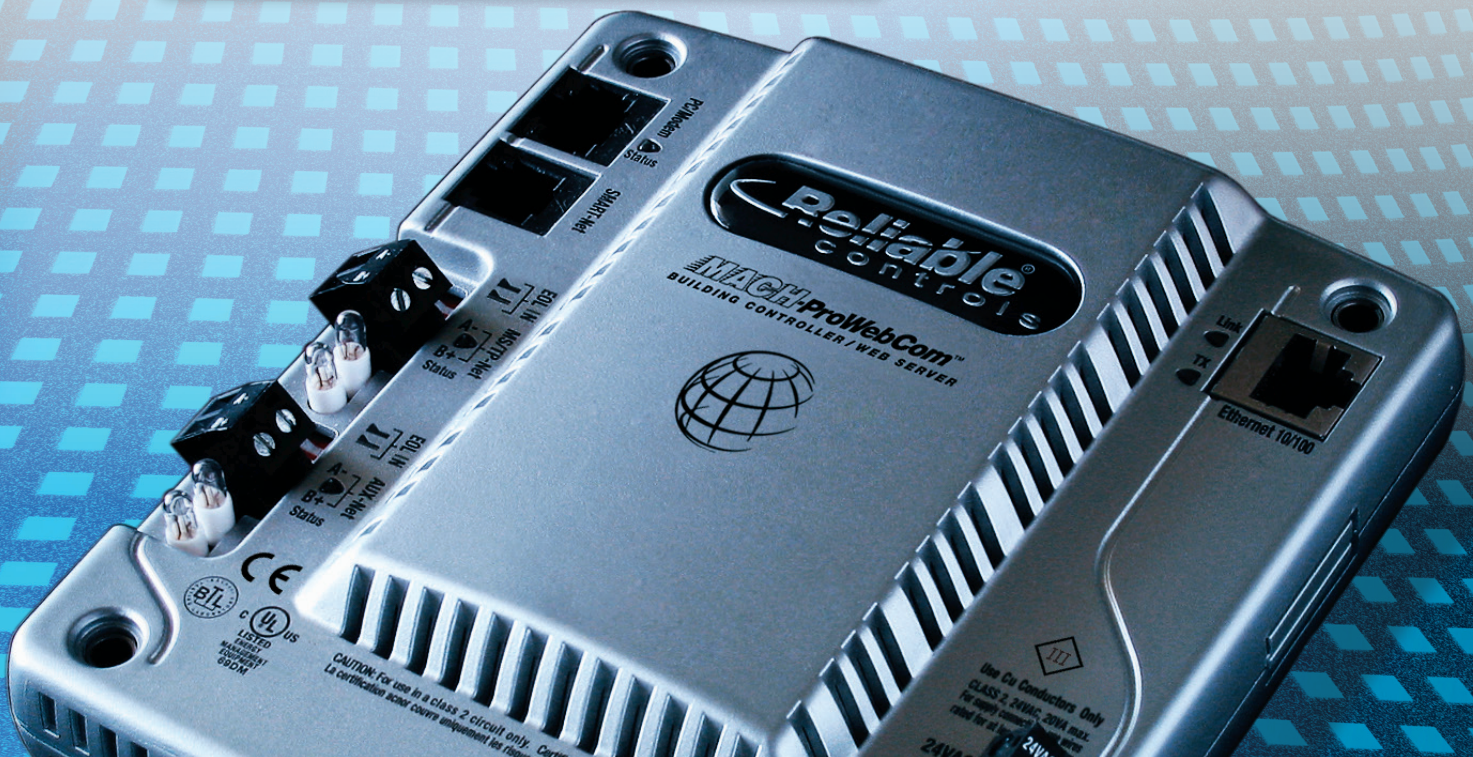


RC-STUDIO® 2.0 UPDATE 1.80 RELEASED

The latest iteration of RC-Studio® was released May 6th of this year. Improvements were made to the Annual Schedules, Calendars, Control-BASIC, Direct Access, Simulator, System Groups, and Workstation Groups. New to RC-Studio® is Automatic Fault Reporting. This new feature allows the pertinent information to be sent to Reliable Controls® and tracked to assist the technical support and the software development teams, ensuring an even more robust product in the future.



Another important addition was the integration of the MACH-ProWeb™ with RC-Archive® data. Now, both archived data and current data can be viewed simultaneously via the MACH-ProWeb™ Interface.

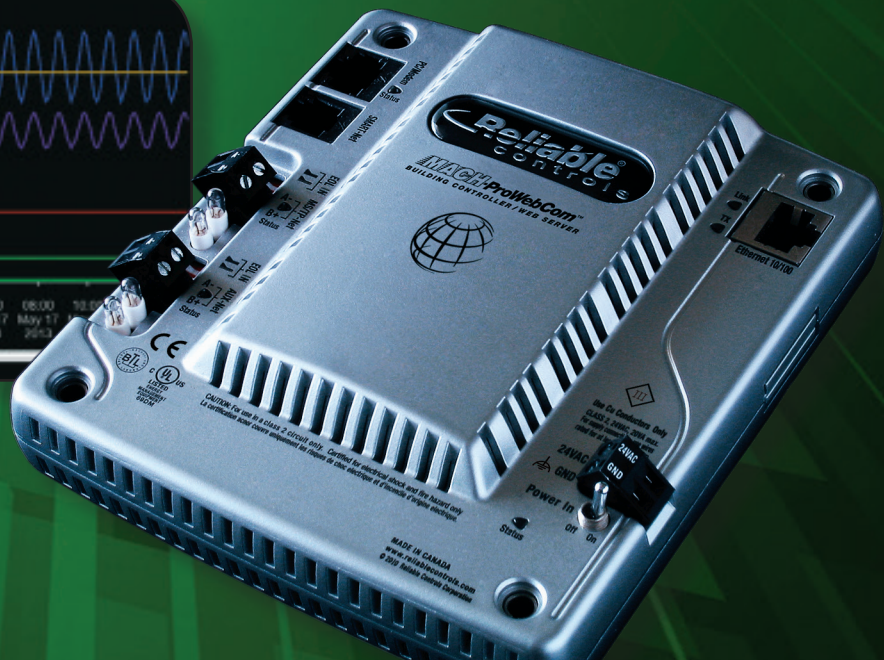
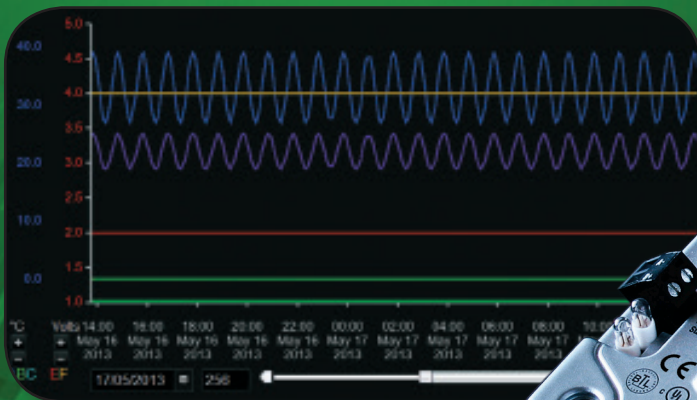


RC-ARCHIVE® 3.01

Also in May of this year, RC-Archive® 3.01 was released with improvements to its Data Collection Service and the License Manager. A new Web Service was added to RC-Archive that allows MACH-ProWeb™ controllers to request Trend log and Runtime log data from an RC-Archive® database server. This archived data appears with green colored row numbers in the data view, and a green highlight along the 'x' axis of the trend view. This allows the operator to quickly distinguish between the data in RC-Archive® and the current data in the controller.

RCArchive™

Data Acquisition Software



Date / Time	ON THE WAY	ON THE WAY UP	ON THE WAY DOWN	ON THE WAY DOWN
17/05/2013 14:00	3.0	3.0	3.0	3.0
17/05/2013 14:05	3.0	3.0	3.0	3.0
17/05/2013 14:10	3.0	3.0	3.0	3.0
17/05/2013 14:15	3.0	3.0	3.0	3.0
17/05/2013 14:20	3.0	3.0	3.0	3.0
17/05/2013 14:25	3.0	3.0	3.0	3.0
17/05/2013 14:30	3.0	3.0	3.0	3.0
17/05/2013 14:35	3.0	3.0	3.0	3.0
17/05/2013 14:40	3.0	3.0	3.0	3.0
17/05/2013 14:45	3.0	3.0	3.0	3.0
17/05/2013 14:50	3.0	3.0	3.0	3.0
17/05/2013 14:55	3.0	3.0	3.0	3.0
17/05/2013 15:00	3.0	3.0	3.0	3.0
17/05/2013 15:05	3.0	3.0	3.0	3.0
17/05/2013 15:10	3.0	3.0	3.0	3.0
17/05/2013 15:15	3.0	3.0	3.0	3.0
17/05/2013 15:20	3.0	3.0	3.0	3.0
17/05/2013 15:25	3.0	3.0	3.0	3.0
17/05/2013 15:30	3.0	3.0	3.0	3.0
17/05/2013 15:35	3.0	3.0	3.0	3.0
17/05/2013 15:40	3.0	3.0	3.0	3.0
17/05/2013 15:45	3.0	3.0	3.0	3.0
17/05/2013 15:50	3.0	3.0	3.0	3.0
17/05/2013 15:55	3.0	3.0	3.0	3.0
17/05/2013 16:00	3.0	3.0	3.0	3.0

Technology Specialist Est

Ryadh
Saudi Arabia

Control Solutions, LLC - TN

Murfreesboro, TN
USA

Core Controls Inc - CA

San Ramon , CA
USA

Domosinal Engenharia, Lda

Valongo
Portugal

Control Technologies West

Anaheim , CA
USA

New DEALERS

Mecatech (Private) Limited

Lahore
Pakistan

Bao Tin Engineering & Investment JSC

Hochiminh City
Vietnam

PKU International Technology Co., Ltd.

Bangkok
Thailand

Hangzhou Aifujiu Science & Technology Ltd

Hangzhou City, Zhejiang
China

TRADE SHOWS

Reliable Controls® will have a strong presence at the following trade shows.



FACILITIES MANAGEMENT SOLUTIONS EXPO 2013

Singapore Expo, Singapore

July 31–August 02, 2013

Booth #K12 & K14

(www.fmse.com.sg/2013)



APPA 2013

Hyatt Regency, Minneapolis, MN

August 02–04, 2013

Booth #709

(www.appa.org/training/APPA2013/index.cfm)



BEX Asia 2013

Marina Bay Sands, Singapore

September 11–13, 2013

Booth #J25

(www.bex-asia.com/)



CHES NATIONAL CONFERENCE

Niagara Convention Centre

Niagara Falls, Ontario

September 22 - 24, 2013

(<http://www.ches.org/en/conferences-events/2013-national-conference.html>)



Advanced Facilities Management
And Engineering Conference

AFEC 2013, ADVANCED FACILITIES MANAGEMENT & ENGINEERING

Denver Mart Expo Hall, Denver, CO

September 25 - 26, 2013

Booth #110

(<http://afec.biz/>)



GREENBUILD 2013

Pennsylvania Convention Center

Philadelphia, PA, United States

November 20 - 22, 2013

Booth #619

(<http://www.greenbuildexpo.org/home.aspx>)



2012 AWARD WINNERS

Regional recognition and appreciation of...

TOP SALES

...highest
sales contribution



SHANXI JIN RUAN ZHI
SHENG TECHNOLOGY
CO

LUCON
AUTOMATION

ENTREPRENEUR

...sustained
new growth



FIVE STAR
MECHANICAL INC.



S.A. DE C.V.

SHAANXI YATE
INSTALLATION
ENGINEERING CO LTD.



MVP

...excellence achieved
in all aspects of business



ELECTROTRADE
Electromechanical Engineering Trading & Contractin

SINOSMARTS - SHIJI
HUA ZHI TECHNOLOGY



EASTERN
CANADA

WESTERN
CANADA

EASTERN
USA

MIDWEST
USA

WESTERN
USA

AUSTRAL-
ASIA

INTERNATIONAL

CHINA

SOUTHEAST
ASIA



enviromatic
SYSTEMS

Congratulations to Enviromatic Systems, Texas for being the first dealer to ever achieve over **\$10,000,000** in historical purchases with Reliable Controls®. This very significant milestone recognizes Enviromatic Systems' strong and long-lasting commitment to customer service and dedication to the controls industry. Congratulations!



Congratulations to Les Contrôles A.C. of St. Romuald, Quebec in being awarded the **2012 Dealer of the Year**. This significant award recognizes a single dealer with the highest sales for the year in all the regions of the Authorized Dealer network.



houle
controls
division
(VICTORIA)



Congratulations to Houle Electric Ltd. - Victoria, LPC Automation Inc., and Modus Structures Inc. for achieving over **\$1,000,000** in historical purchases with Reliable Controls®.

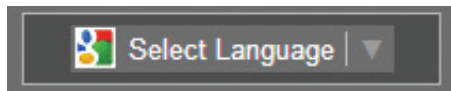
THE TOP 25



The Greater Victoria's high-tech sector has just topped the \$3-billion mark in revenues.

Amongst nearly 900 high-tech companies, Reliable Controls® has recently received the VIATeC 25 award for 2012, given to the top 25 largest companies in the Greater Victoria area. The Top 25 companies alone account for a billion dollar a year industry in Victoria, British Columbia.

THE POWER OF WORDS



To reach out to a worldwide network of Authorized Dealers and Customers, and to improve our service, Reliable Controls® has implemented a "Select Language" dropdown list. Selecting a language will translate the entire Reliable Controls® website to that language. The list of selectable languages is quite extensive and currently includes:

Arabic, Chinese (simplified), Chinese (traditional), Danish, Dutch, Finnish, French, German, Greek, Hebrew, Hindi, Hungarian, Indonesian, Italian, Japanese, Korean, Malay, Norwegian, Polish, Portuguese, Spanish, Swedish, Thai, Turkish, Ukrainian, Vietnamese, and English.

The service is reasonably accurate, and for any mis-translations it also allows you to suggest a better translation. Just hover your mouse over a section of text and a popup window will appear showing the original text with an option to contribute a better translation.



Please let us know if this new service is helpful to you.

Sales

Service

Commissioning

Engineering

Installation

Nationwide network



Reliable Controls® is a global BACnet® BMS supplier that has teamed-up with locally owned independent controls contractors to build a nationwide network of Authorized Dealers, covering all of the major centers in North America.

Visit our website to locate a Reliable Controls® Authorized Dealer near you, or contact one of our five regional sales offices in North America.

www.reliablecontrols.com/contact



Western Canada Sales
Ph: 403.873.5131

Western USA Sales
Ph: 415.892.4165

Midwestern USA Sales
Ph: 614.545.8020

Eastern USA Sales
Ph: 215.817.5108

Eastern Canada Sales
Ph: 905.355.2340

CARROLL COUNTY COURTHOUSE

CARROLLTON, OH, USA

CORRECTIONS

THE SANDSTONE SLAMMER

Built in 1884 in the Second Empire style, the Carroll County Courthouse is a 4-story, mixed-use facility. The courthouse building constructed of Navarre sandstone is connected to a two-storey rear-wing that was added in 1976 to provide additional space for the county jail and an annex for county officials.

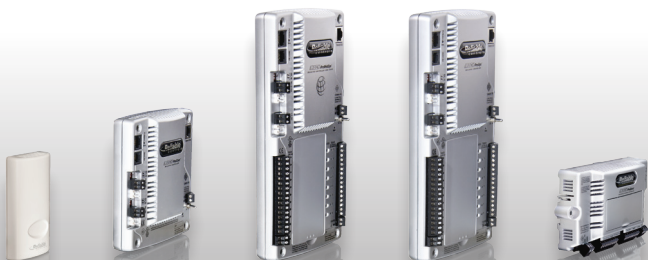
PROJECT DETAILS

Reliable Controls® Authorized Dealer, Best Commercial Energy Services provided the Carroll County Courthouse facility with an economical and flexible HVAC upgrade by performing a complete pneumatic to digital renovation. After replacing the aging pneumatic HVAC system, the courthouse runs on a uniform platform that provides reliable HVAC.

The MACH-ProWebSys™ and MACH-ProSys™ controllers are utilized to control three 20-ton multi-zone Air Handler Units (AHUs) with DX cooling deck and hot water heat deck. The MACH-ProPoint™ IO expansion modules are used to control zone mixing dampers and zone damper position. The MACH-ProZone™ controllers are remotely located in the space to collect zone temperature for zone temperature panels connected via MS/TP. Onsite mechanical equipment consists of two steam boilers for lead/lag with hot water heat exchanger. The Reliable Controls® MACH-System is controlling sequence of operations on a 30-ton Trane chiller, as well as all sequences of steam plant, including the supply of heat to other older parts of the building.

Carroll County administrators report tremendous savings in both natural gas and electric.

To learn more about projects using Reliable Controls® visit
www.reliablecontrols.com/projects/overview



PROJECT TYPE:

Retrofit

INSTALLATION TYPE:

**Boiler, Chiller, HVAC, VAV,
Multi-zone AHUs**

TOTAL AREA:

60,000 m² (645,835 ft²)

EQUIPMENT INSTALLED:

**1 MACH-ProWebSys™
2 MACH-ProSys™
4 MACH-ProZone™
8 MACH-ProPoint™
23 SPACE-Sensor™ Temperature**

NETWORK:

EIA-485, LAN, WAN

TOTAL SYSTEM POINTS:

160 points

CONSULTANT:

Kramer Engineers, Columbus, OH

RELIABLE CONTROLS® DEALER:

Best Commercial Energy Services

www.reliablecontrols.com